

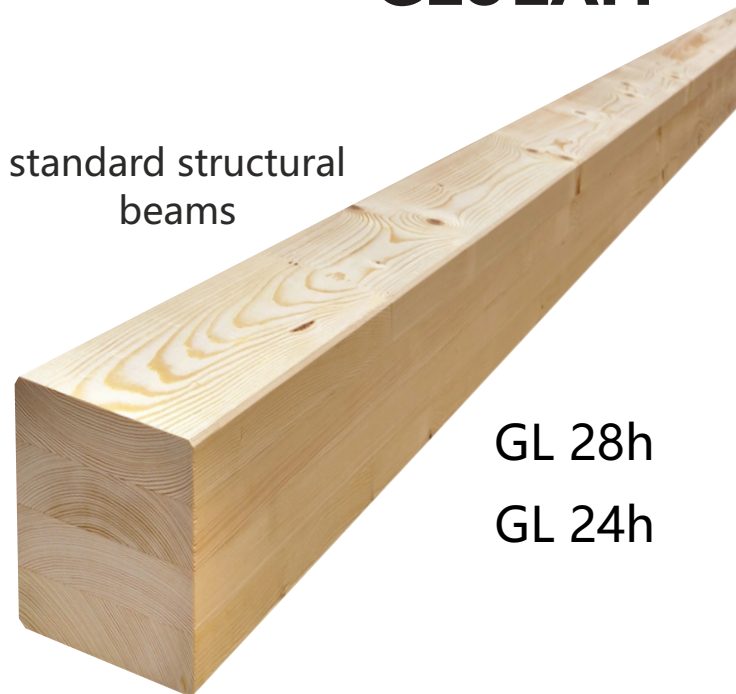
Glulam



Glued laminated timber redefines the possibilities for engineered wood construction. Glulam is an innovative structural timber solution used in a wide variety of commercial, residential, leisure and industrial projects. Perfect for wide openings and innovative designs. A way of building that combines strength, sustainability, aesthetics.

strength classes	GL 24h, GL 28h
width	65 ÷ 240 mm
height	120 ÷ 2.240 mm
max. length	36.000 mm
timber	spruce or pine
humidity	12% ± 3% acc. EN 408+A1
density	420 or 460 kg/m ³
adhesive	PUR & MUF Type 1 acc. EN 301
lamella thicknesses	10 ÷ 40 mm depending on the radius
service classes	1, 2, 3 indoor/outdoor
conformity	SR EN 14080
certification	2204-CPR-01069 Icecon Cert
timber grading	visual acc. SR EN 14081
finishing	visual quality

standard structural beams



GL 28h
GL 24h

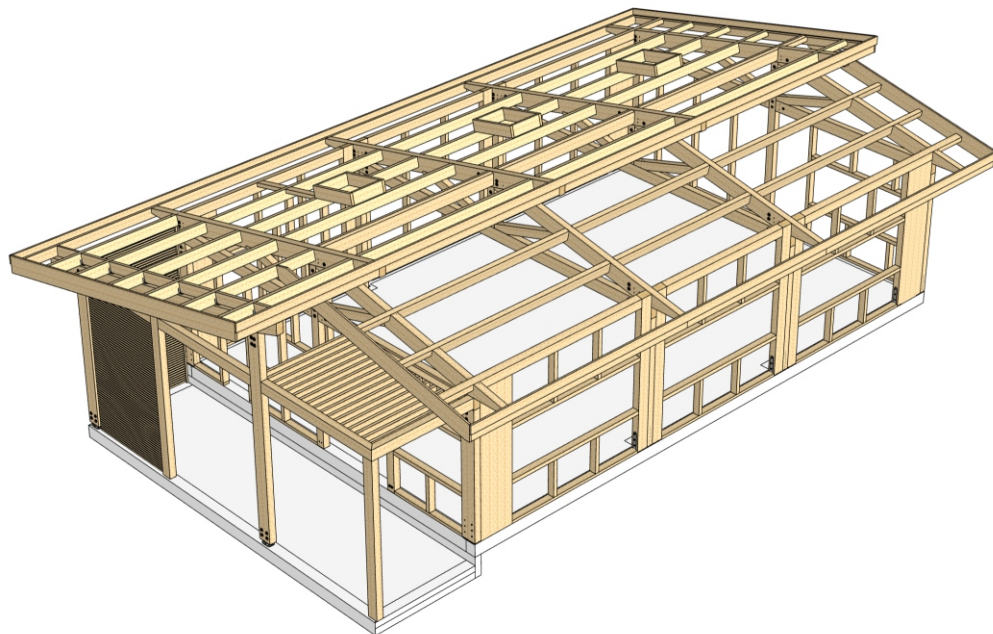
More than 145 standardized section sizes

Dimensions		width (mm)								
		65	90	120	140	160	180	200	220	240
height (mm)	-									
	-									
	120									
	160									
	200									
	240									
	280									
	320									
	360									
	400									
	440									
	480									
	520									
	560									
	600									
	640									
	680									
	720									
	760									
	800									
840										
.....										
2.240										

any type-dimensions can be manufactured on request



GLULAM SA
Cezar Ivanescu 17, Targoviste, 130146 ROU
+40 245 222 120 / +40 245 222 134
glulam@glulam.ro
www.glulam.ro



romanian timber engineering